



## Assembly instructions for Arlo-Micromodel LE 2600 Basic kit

Thank you for purchasing our kit. We hope you will enjoy to model your Alsthom LE 2600 locomotive !

### I- Included parts:



- 1- Cast bodyshell
- 2- Sandbox and central housing sideframes
- 3- Cast bogie sideframes and foot step ladders
- 4- Front and rear optional central plates
- 5- Transparent vacform parts
- 6- Pantograph support frames
- 7- Water decals for all prototype lettering serial numbers
- 8- Section-cut electrical apparatus, complementary part

## II - Some of the required tools for modeling the kit:



- 1- Cutter
- 2- Drill - 0,3 e 0,5 mm.
- 3- Set of various shape files
- 4- Sand paper of various grain types for hard thinning of surfaces and smooth finishing touches
- 5- Bending and cutting plyers
- 6- Good quality cianoacrylate glue.
- 7- Quality Primer and paints like Revell/Tamiya ones, Fast drying putty filler
- 8- Mini drill station
- 9- 4 spring buffers L-525300 from Liliput or others of your choice.
- 10- Real-like couplers and tubing from Weinert or similar
- 11- Freelance powertrain basis. We suggest any brand BB 15000, BB 22000 SNCF Locos
- 12- Masking tape or fluid to your choice
- 13- NEM coupler adaptor at modeller's choice

### III - Preparing the parts for primer coating ( Sample pics from our EE 1400 kit):

1-



- Remove all the window flash.

2-



- Filling of small gaps and bubbles, and correcting work of eventual imperfections.

3- Putty sanding and smoothing as required.

4- Adjusting of the various transparent parts. After adjustment, you may choose to fix them definitively before or after painting, using a toothpick with a small drop of transparent-dry white glue or crystal fix from Humbrol or similar.

When choosing to place all these parts before painting, be sure of masking them carefully.

Note: Our Vacuum-formed clear parts are polycarbonate made. This material is resistant to most solvents without damage . However you may test clean in a small spare cut.



Sample pics are from our EE 1400 kit

5- After these main preliminary procedures are done, it's time to prepare the chosen powertrain to the cast body shell. By default, we include four inner body resin columns that may be used to fix the shell to the underframe by using any chosen screws. These fixtures may be removed from place by sawing them away and then moving into a more convenient place.



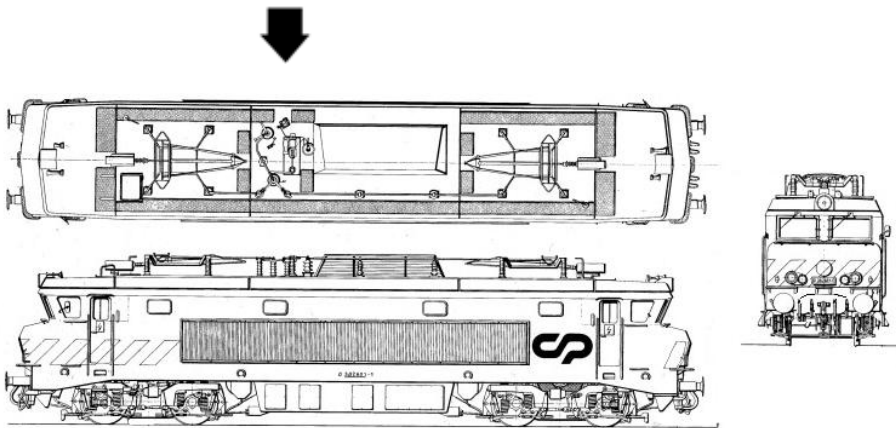
Remember that the chosen underframe must be adapted to perfectly fit the resin cast shell, so some tests must be often made. Place for eventual DCC decoder and if Loksound is to be fitted, also for the matching speaker.

After these procedures are done, study the bogie resin cast sidings fixing them in the proper place. If necessary, these sidings may be adapted to the best modeller's choice, just taking some care not to damage the main details.



Here is a photo of the prototype bogie:

6 -Now it's time to degrease all parts with isopropyl alcohol or other product of your choice before primer coating. Take some care to the engine roof electrical layout, that may be entirely built in this stage, before painting. The cut-section little complementary part, must now be glued in place:



After the primer coat, check the pattern for any finish imperfections that may need some putty filling and light abrasive sanding.

The decals fit the brown/orange only existing livery of this locomotive. Due to the multi angular shape of cabin heads, we advise to close cut the white stripping and study the correct alignment before soaking the decal in water. Some adjustments are required.



Now the required colors for the paint job:

Orange: Vallejo model color 70851 or RAL 2004

Brown : Vallejo model color 70872 or RAL 8017

Silver: Satin aluminium for roof vent housing and step plates ( with a touch of gun metal if you prefer these plates weathered )

Gloss silver for side grilles.

Cabin interior: Yellow sand



**For further assistance, feel free to contact us. We will gladly help you**

**Nuno Rocha-Brito e André Rocha-Brito,**

**[micromodel.pt@gmail.com](mailto:micromodel.pt@gmail.com)**